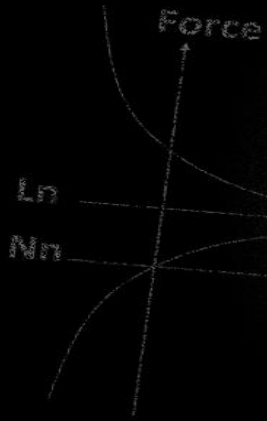


$$m \frac{d^2 x}{dt^2} + b \frac{dx}{dt} + kx = f + mg$$

$$\tau = \frac{-t_n}{\ln\left(\frac{L - f_n}{L - N}\right)}$$

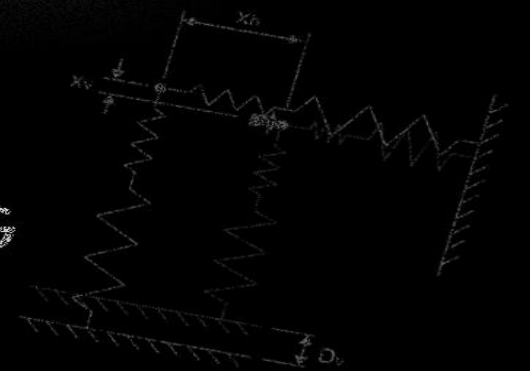


Science of Bond Testing

XYZTEC

GOLDEN RULES OF BOND TESTING

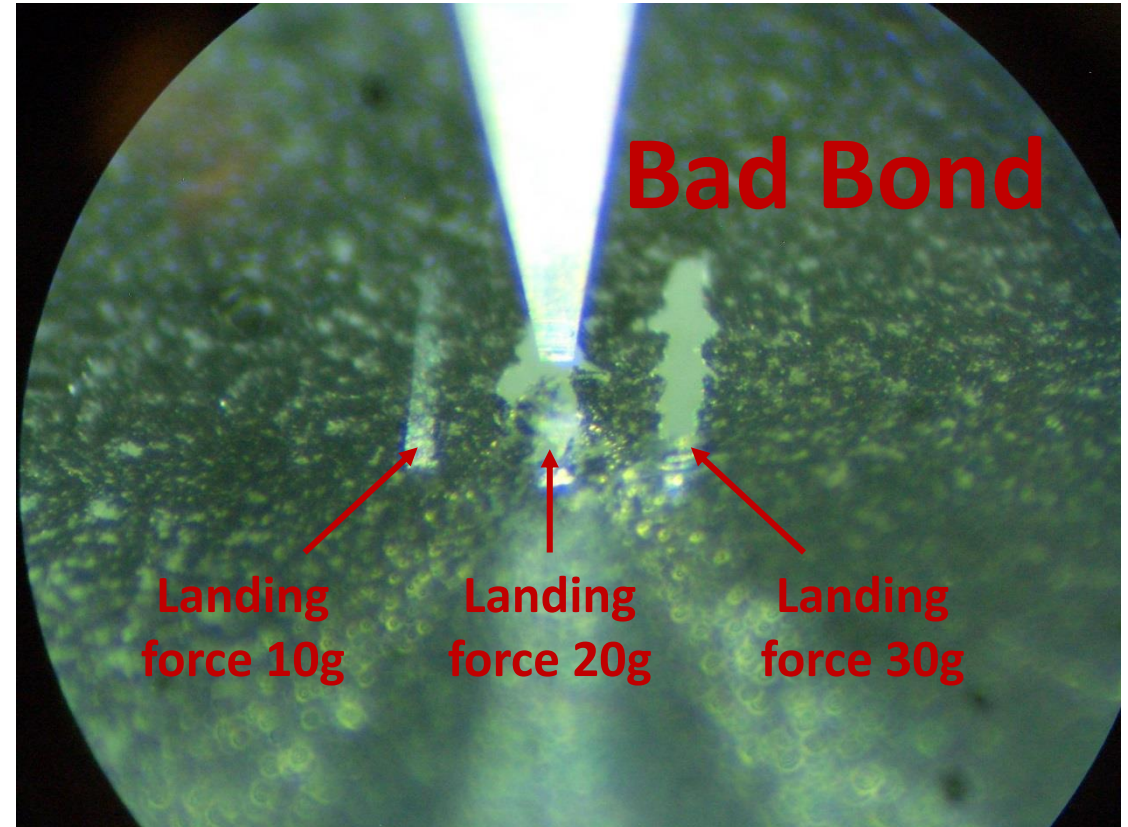
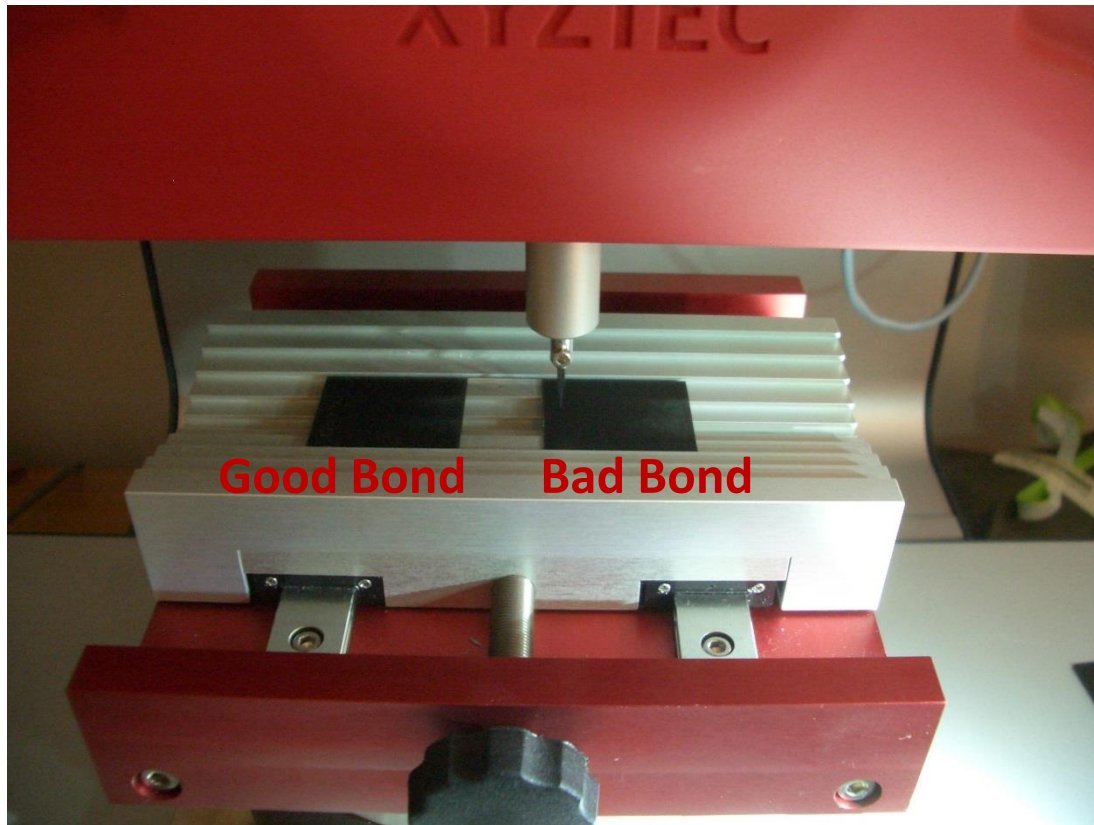
$$R = \frac{1}{e^{-(T_n - T_0)/\tau} - 1} - 1$$



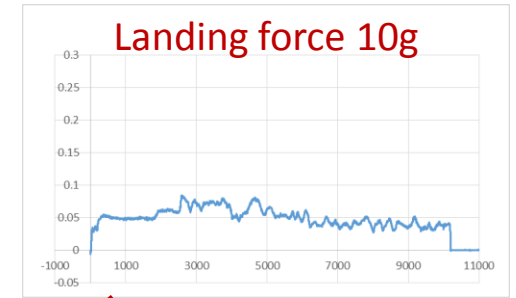
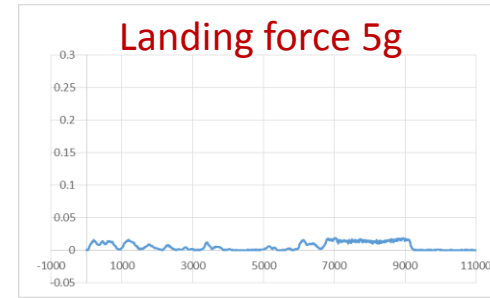
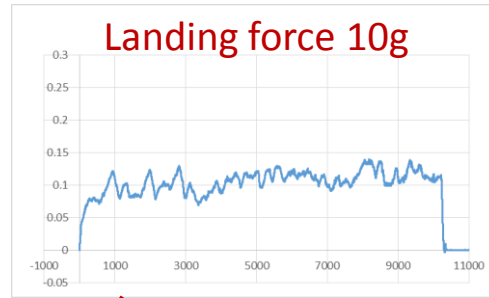


Measuring the Quality of a Surface Finish by Bond Strength and Failure Mode

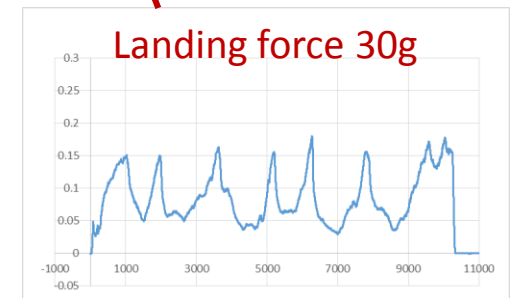
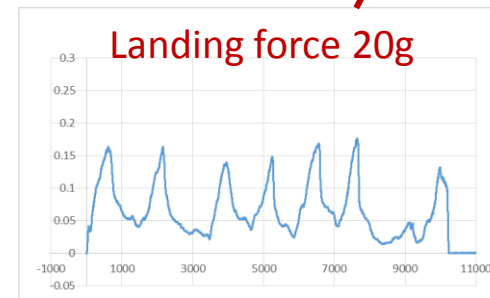
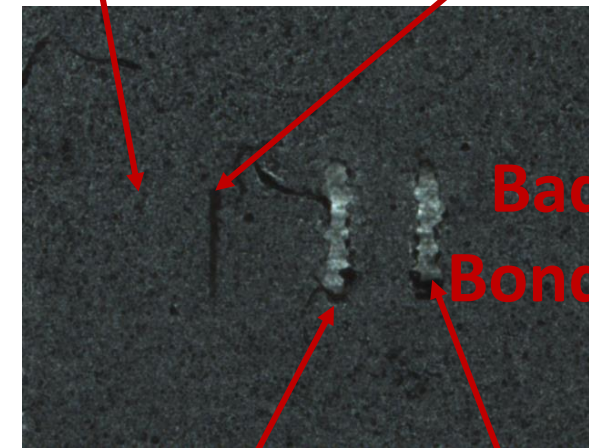
Scratch Test



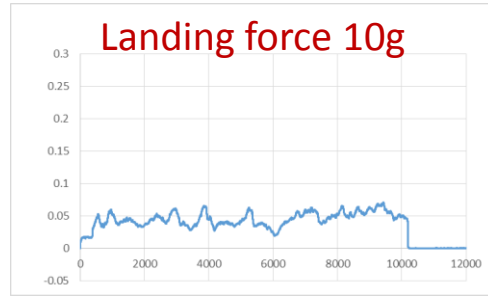
Scratch Test



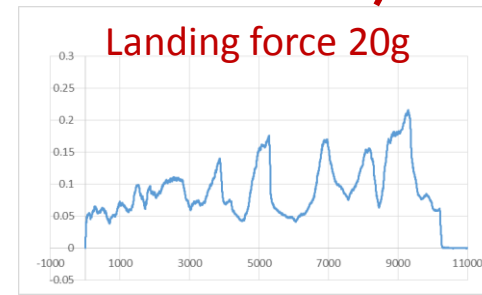
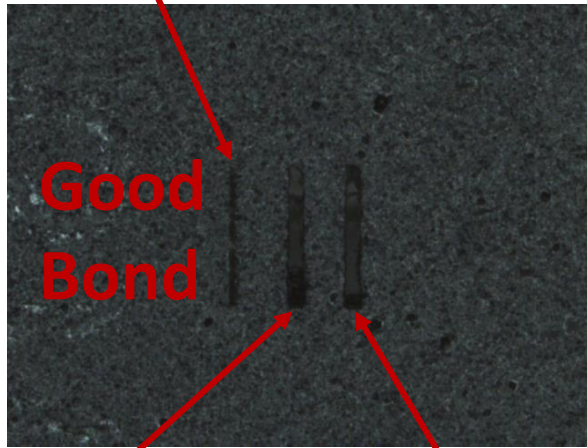
All graph axis
X in μm
Y in Newton's



Scratch Test



All graph axis
X in μm
Y in Newton's



Video Testing a Bad Bond

